

MID CLAMP – QUICK

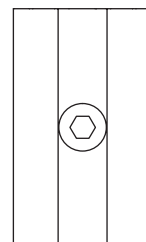
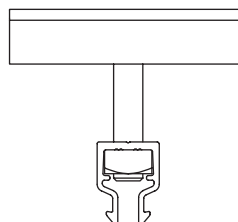
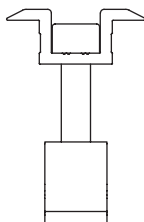
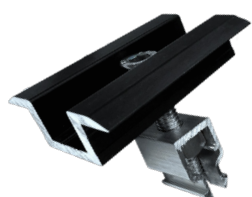
WITHOUT SPRING 30–40MM

Ref : 301035

Material: Aluminium – 6063 T66
Weight: 0.07 kg / piece



Technical Data



Description	Height	Width	Depth	Material
Quick clamp - mid - without spring	23 mm	36 mm	80 mm ± 0,4	Alu. 6063 T66

Box size	Weight (kg)/pc	Weight (kg)/box	Qty/box (pcs)	Qty/pallet (pcs)	Boxes/Pallet	Pallet size
210x180x160mm	0,07	3,5	50	5000	100	1200x800mm

Mounting diagram

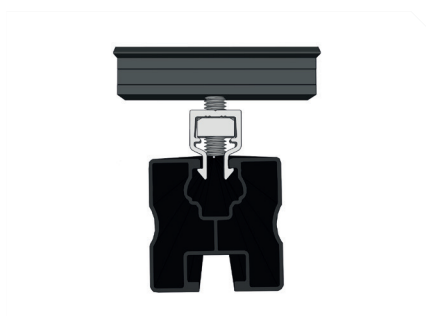
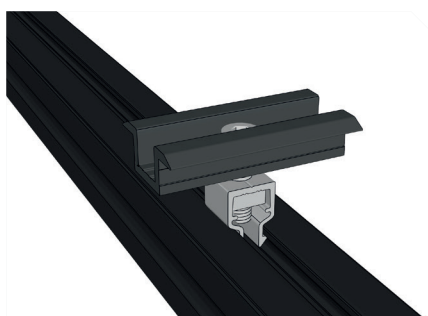


Diagram with rail

